

Open Back Choli with Apron

by Sabine de Rouen

Front and Back Views

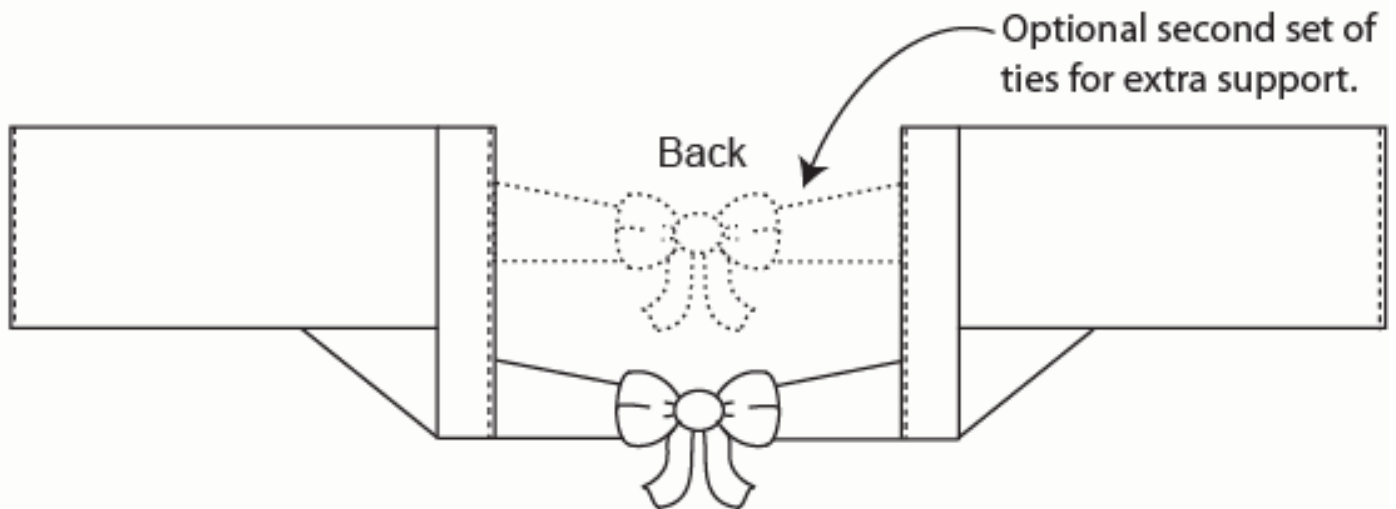
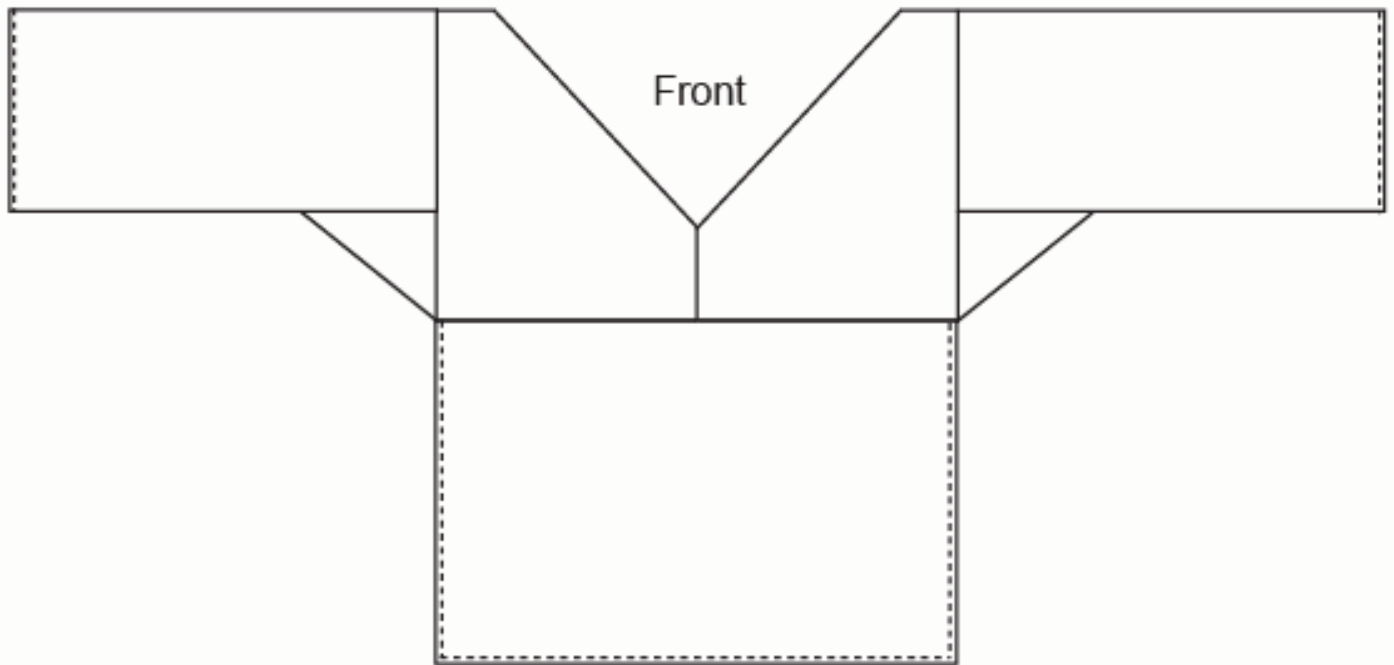


Figure 1

Please read all directions before starting your Choli.

Instruction, Illustrations, & Photographs by Sabine de Rouen / Chele Martines

Choli Pattern Pieces

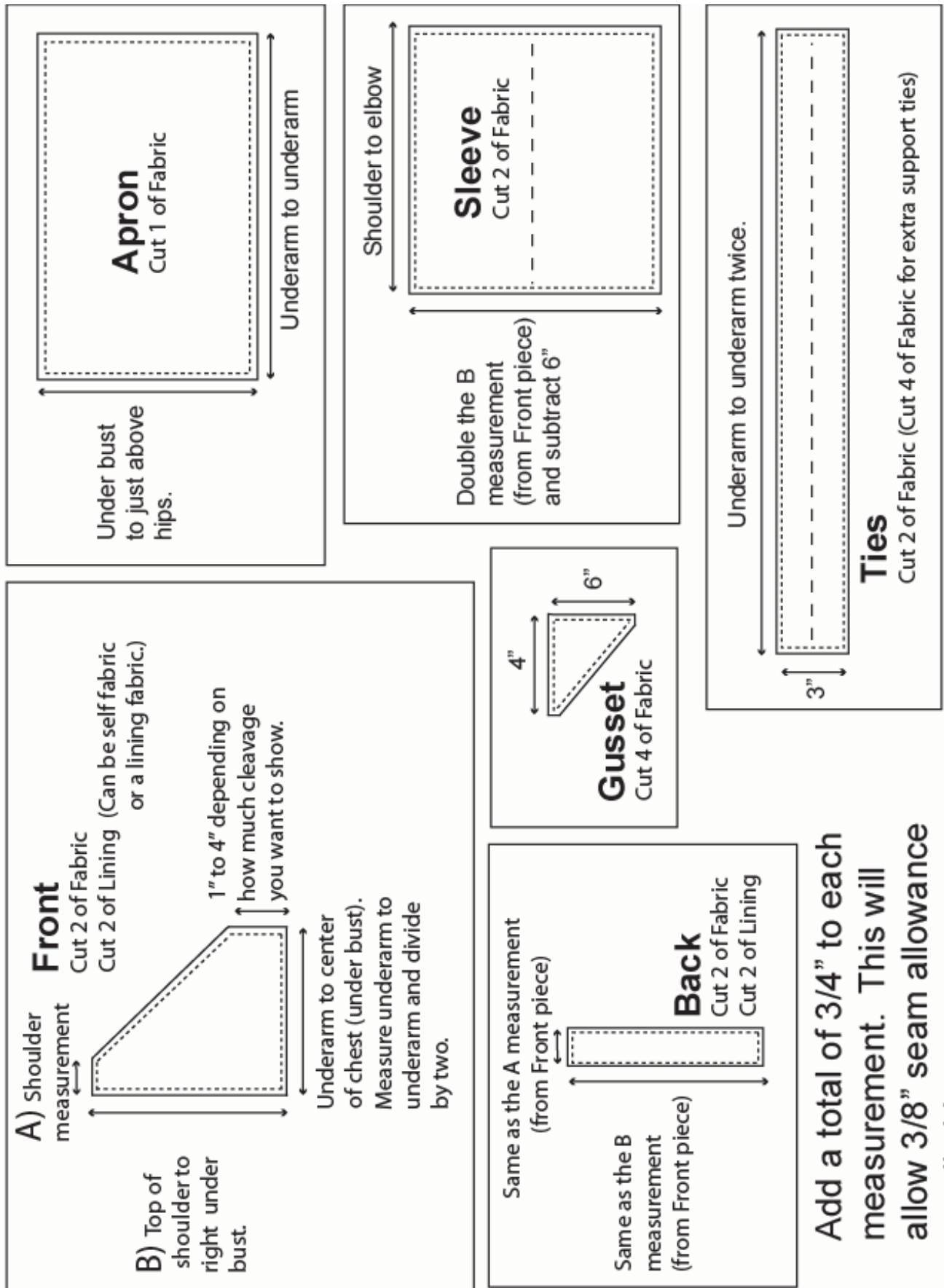


Figure 2

Wash, dry, and iron your fabric before you cut out your pattern.

You may prefer to test your pattern by constructing your first Choli from muslin or another similar material. This pattern is not suitable to stretch fabrics.

For question please contact Sabine de Rouen at DuchessSabine@ParagonKeep.com

Pattern Pieces Laid Out in Proper Placement for Construction

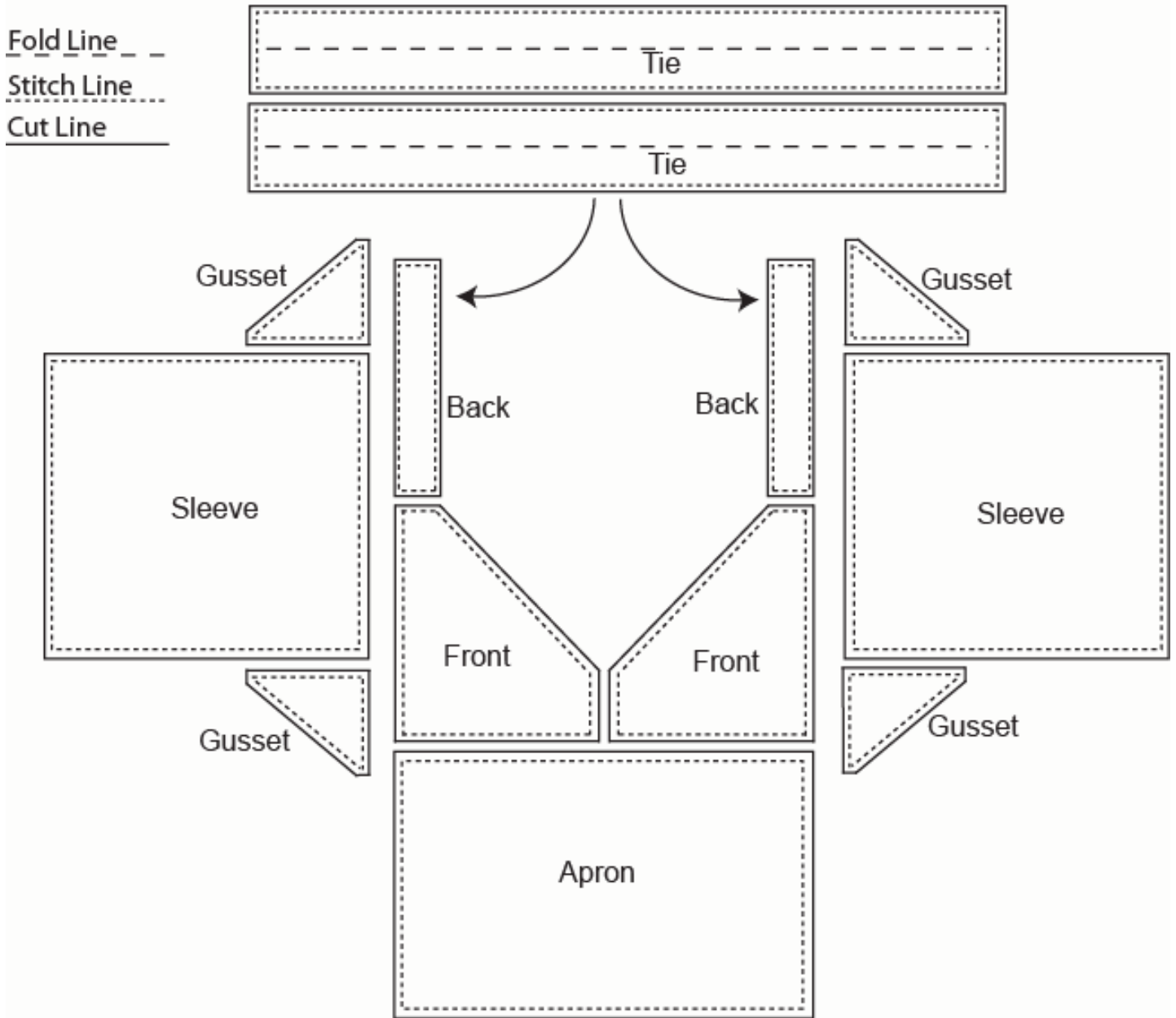
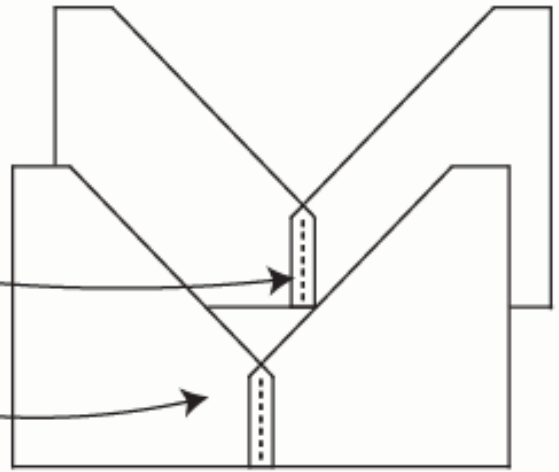


Figure 3

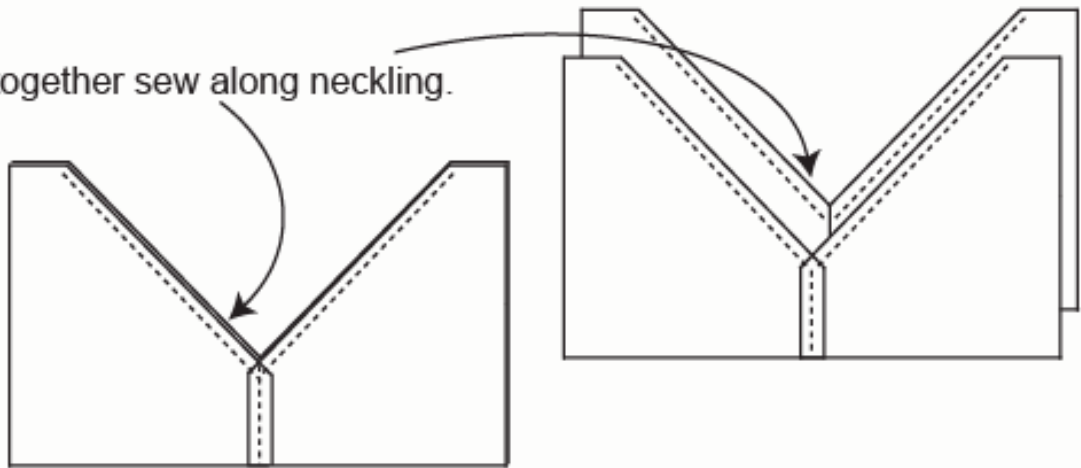
Construction

front

- Sew front fabric panels together at center front.
- Sew front lining panels together at center front.



- With right sides together sew along neckling.



- Turn panels right side out. Press neckline seam flat.

- Secure fabric and lining by stitching them together along sides and shoulders.

- Leave bottom open to insert apron.

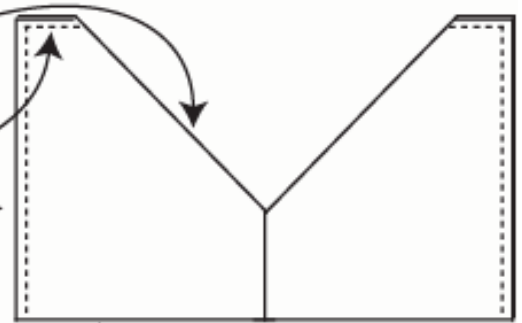


Figure 4

- Hem sides and bottom edges of the apron.
- Fold in the edges of the front fabric and lining fabrics $3/8''$.
- Insert raw edge of apron between front fabric and lining $3/8''$.
- Stich opening closed encasing the raw edge of the apron between the two front layers.

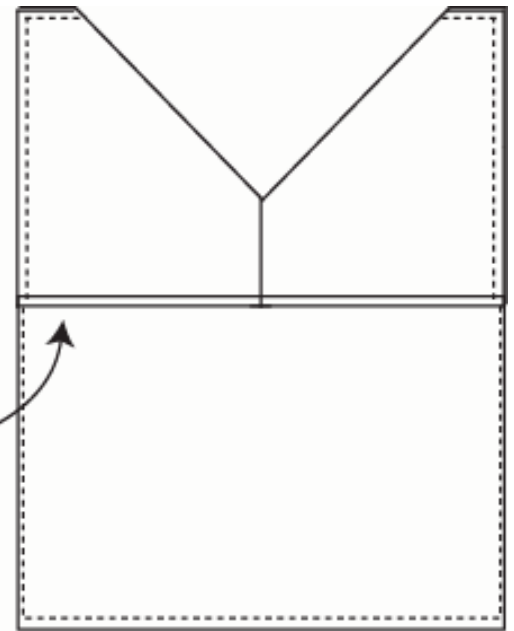
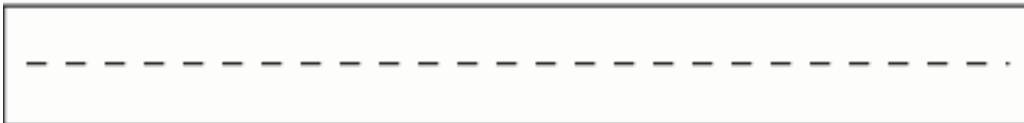


Figure 5

Ties

- Fold the length of the ties in half (right sides together).



- Sew the long side and one end closed.



- Turn the ties right side out and press flat.

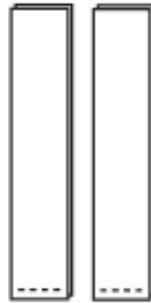
Figure 6

Back

- Sew back panels (fabric and lining) right sides together.



- Sew along bottom. Leave top and both sides open.



- Turn panels right side out. Press seam. Secure fabric and lining by stitching one side (arm side) and top closed.

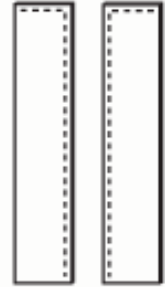
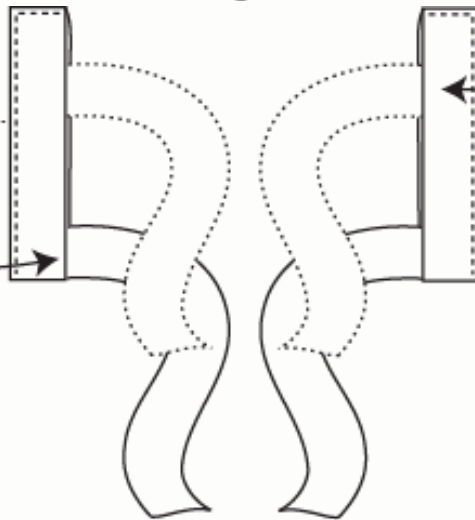


Figure 7

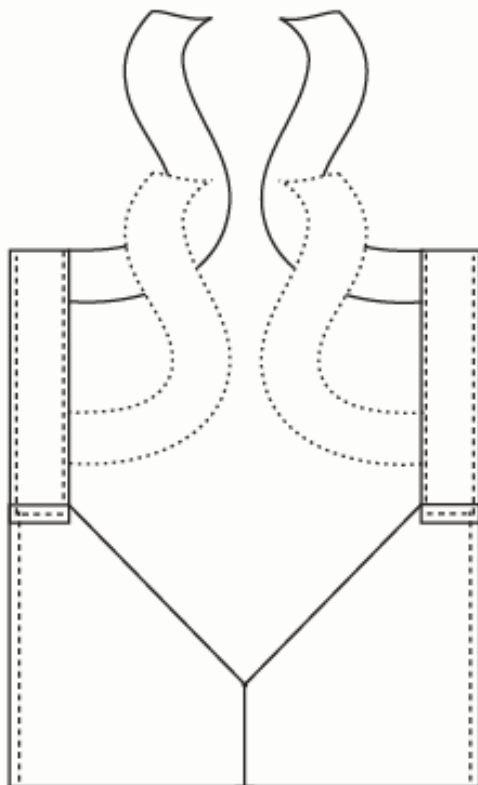
- Fold in open side of back panel 3/8". Slip ties into open side of back panel 3/8".

- Place bottom ties at sewn end of back panel.



- Place optional top ties 3" to 4" above bottom ties (This will need to be adjusted according to your body measurements).

- Once all ties are in place top stitch the seam closed.



- With fabric (lining side down) right sides together sew open end of back panel to front. Make sure secure stitching is directed towards the arm not the neck.

Figure 8

Sleeves

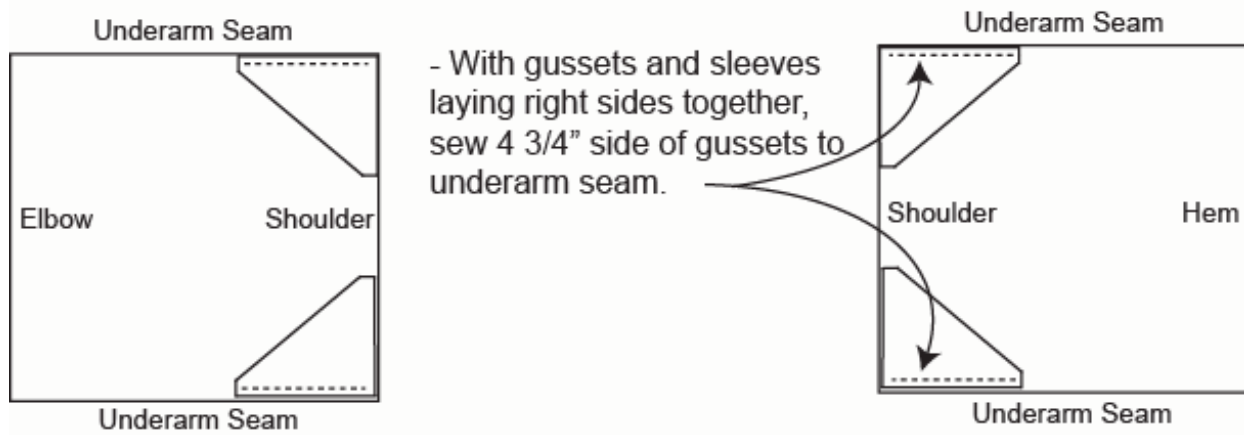


Figure 9

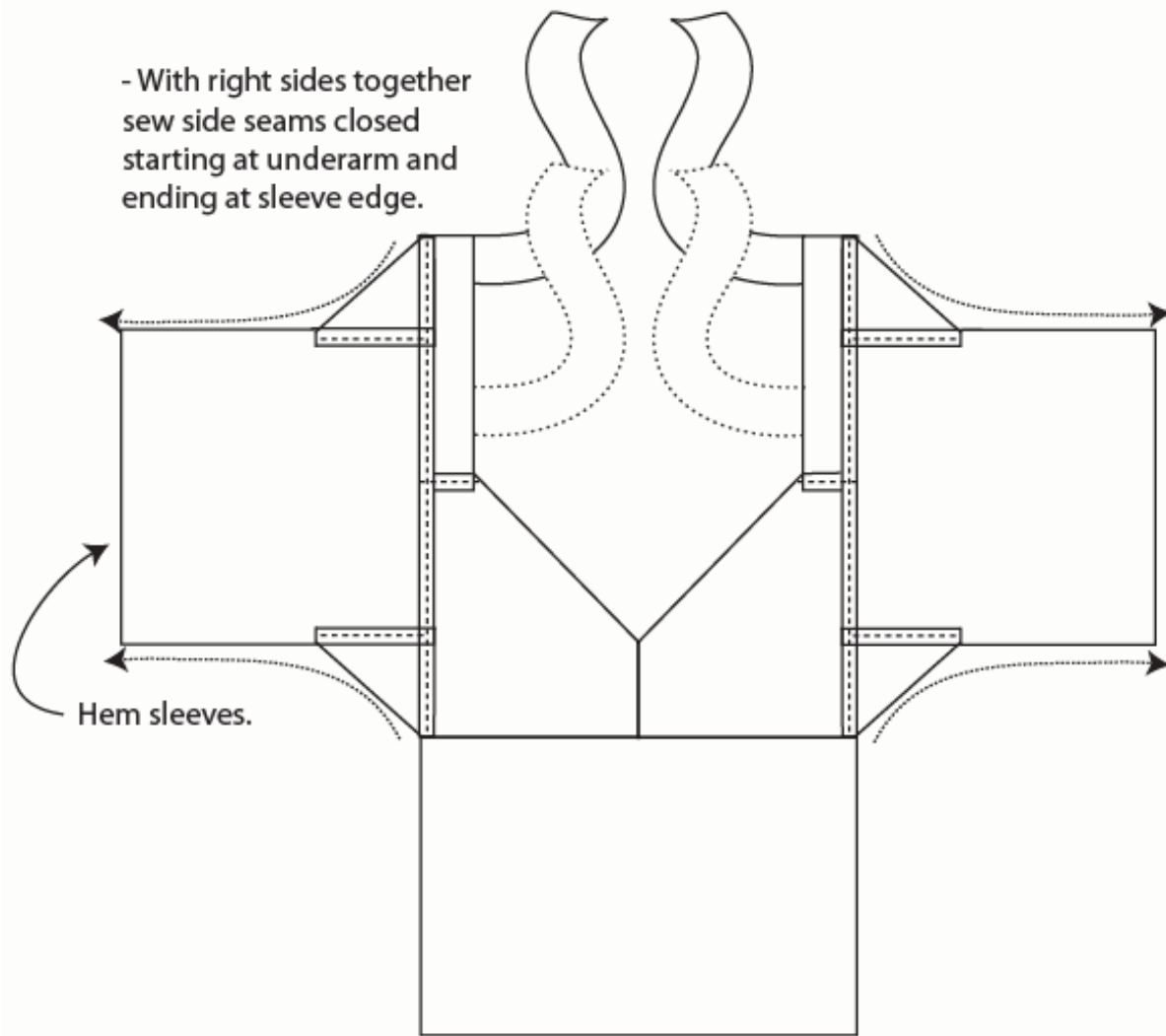


Figure 10